

# EIT RawMaterials LH Raw Materials and Circular Societies Brussels 10/10/2019

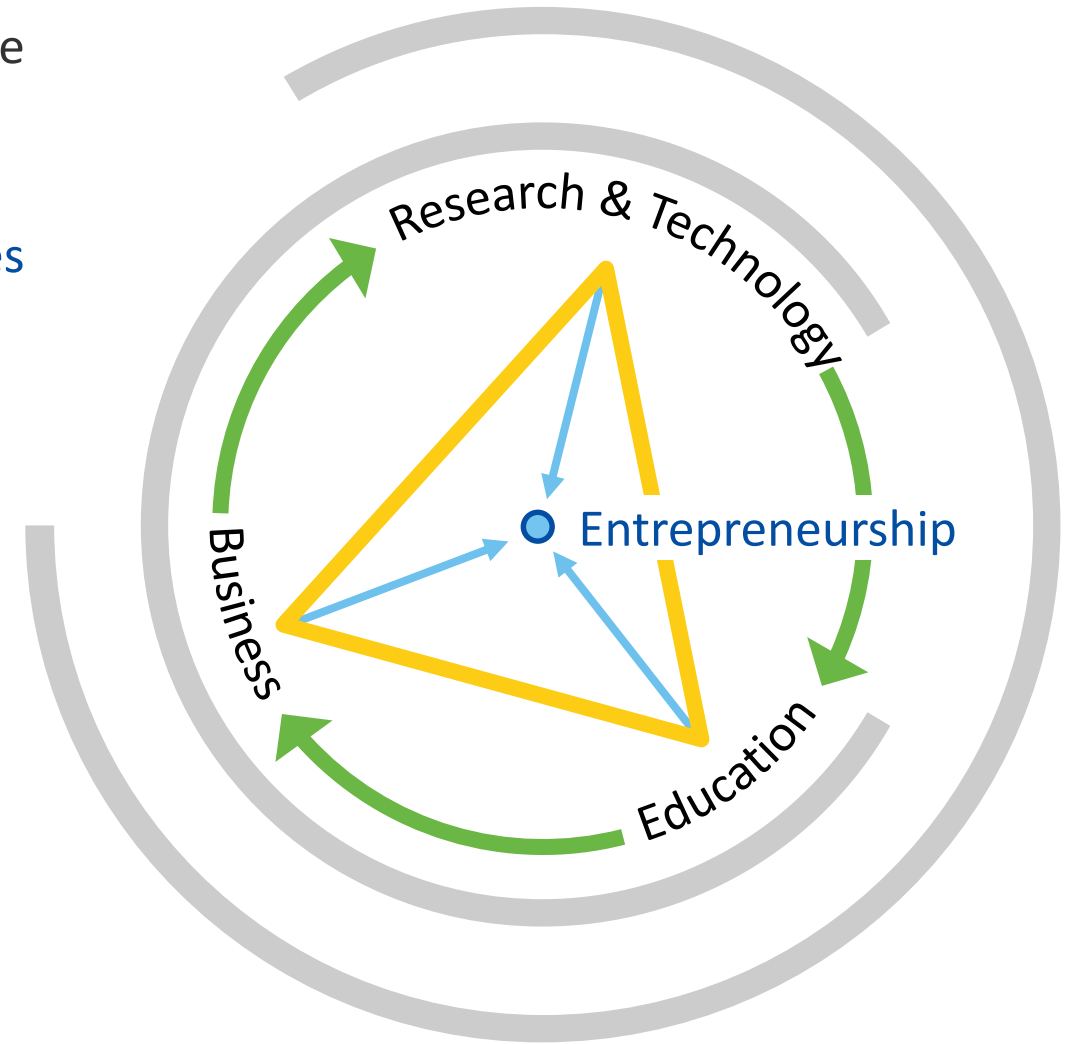
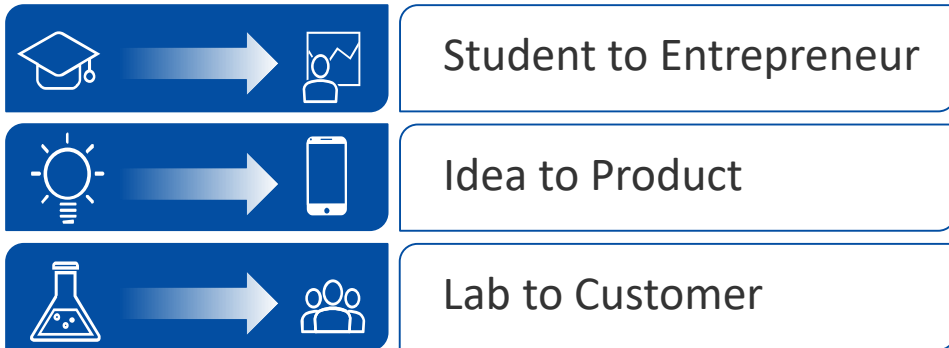


# EIT (European Institute of Innovation and Technology)

The EIT is an EU body that enhances Europe's ability to innovate by nurturing young entrepreneurial talent and supporting new ideas through the Innovation Communities.

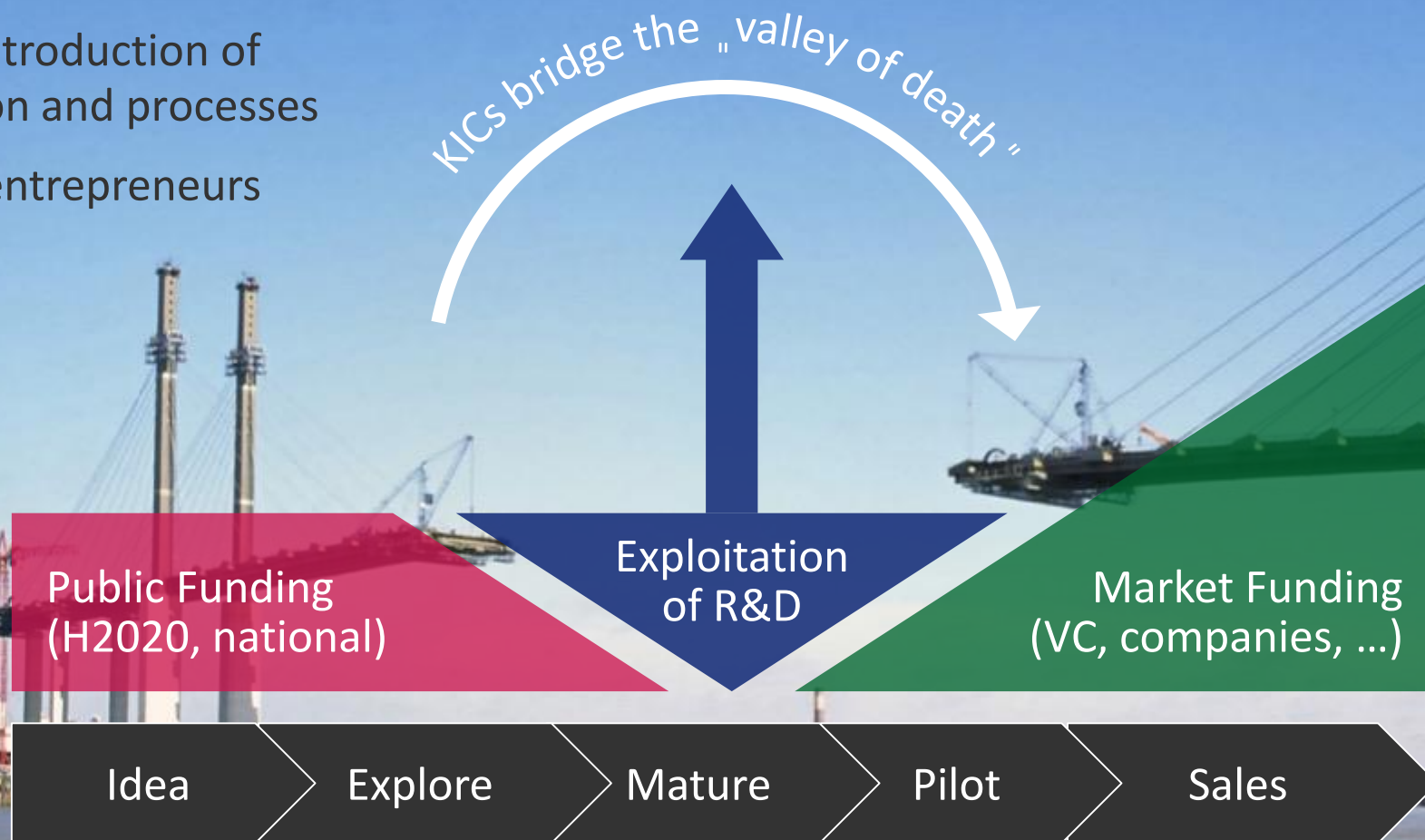
The EIT is the first EU initiative bringing together the three sides of the 'knowledge triangle': Business (companies and SMEs), Higher Education Institutions and Research Centres.

The EIT aims to increase the cooperation and integration between education, business and research to facilitate the transition from:

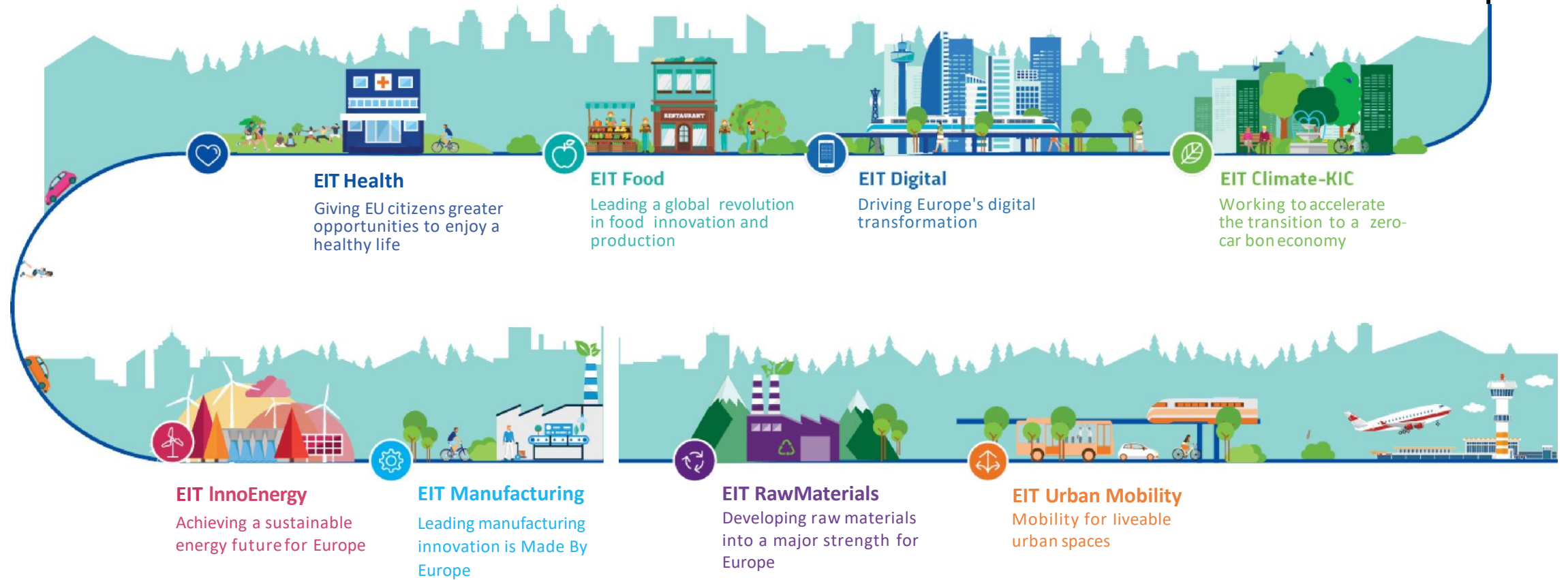


# What is the purpose?

- Bridging the valley of death
- Market introduction of production and processes
- Educate entrepreneurs



# EIT Innovation Communities





# A pan-European Partner Network

- Coverage of the entire raw materials value chain
- World's largest community in the raw materials sector
- Over 120 core and associate partners and 180+ project partners
- 22 countries
- Six Co-location Centers (Innovation Hubs) across Europe
- Headquarter in Berlin, Germany

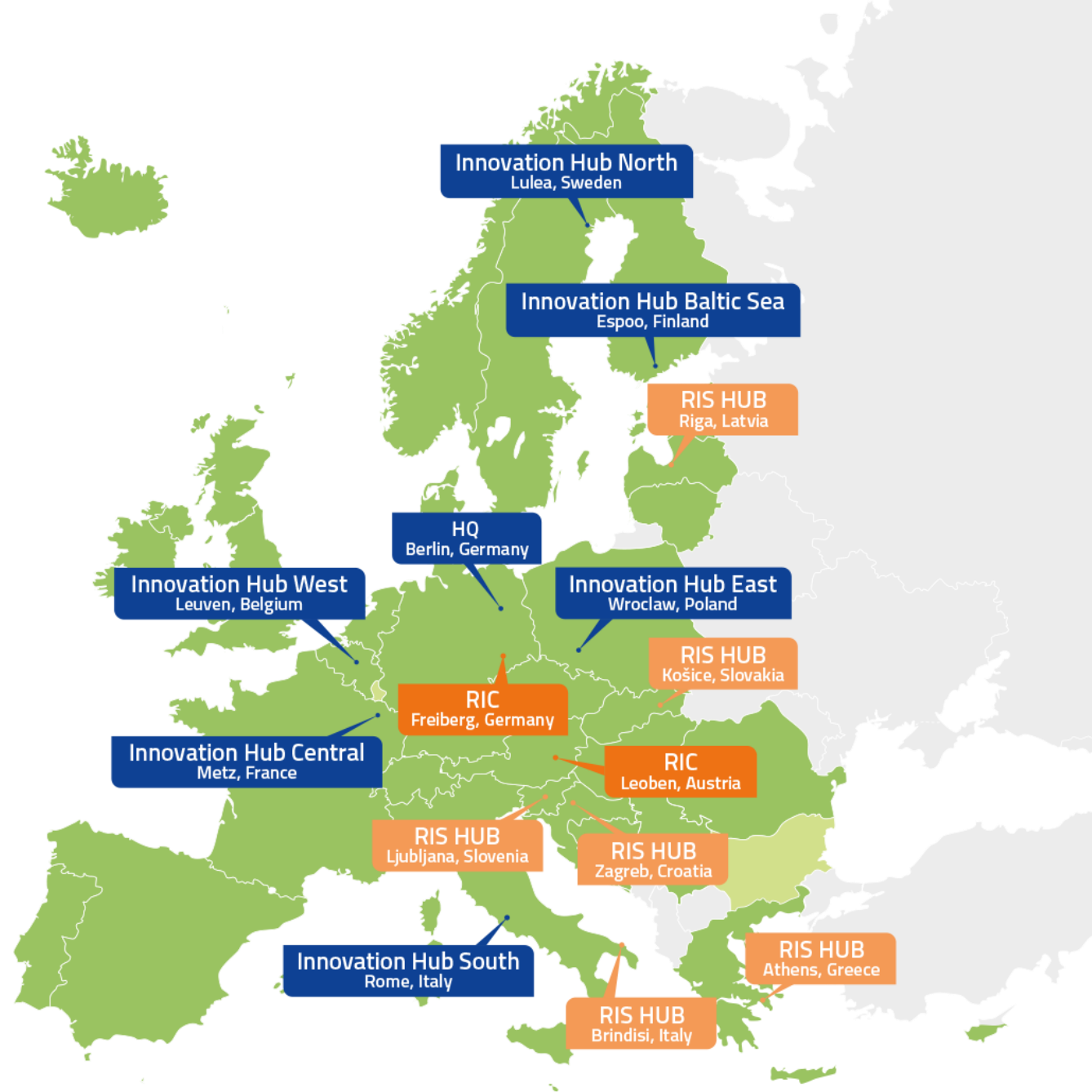
■ Countries covered by EIT RawMaterials

■ EU countries

■ Innovation Hub (Co-Location Center)

■ RIC (Regional Innovation Center)

■ RIS HUB (Regional Innovation Scheme)

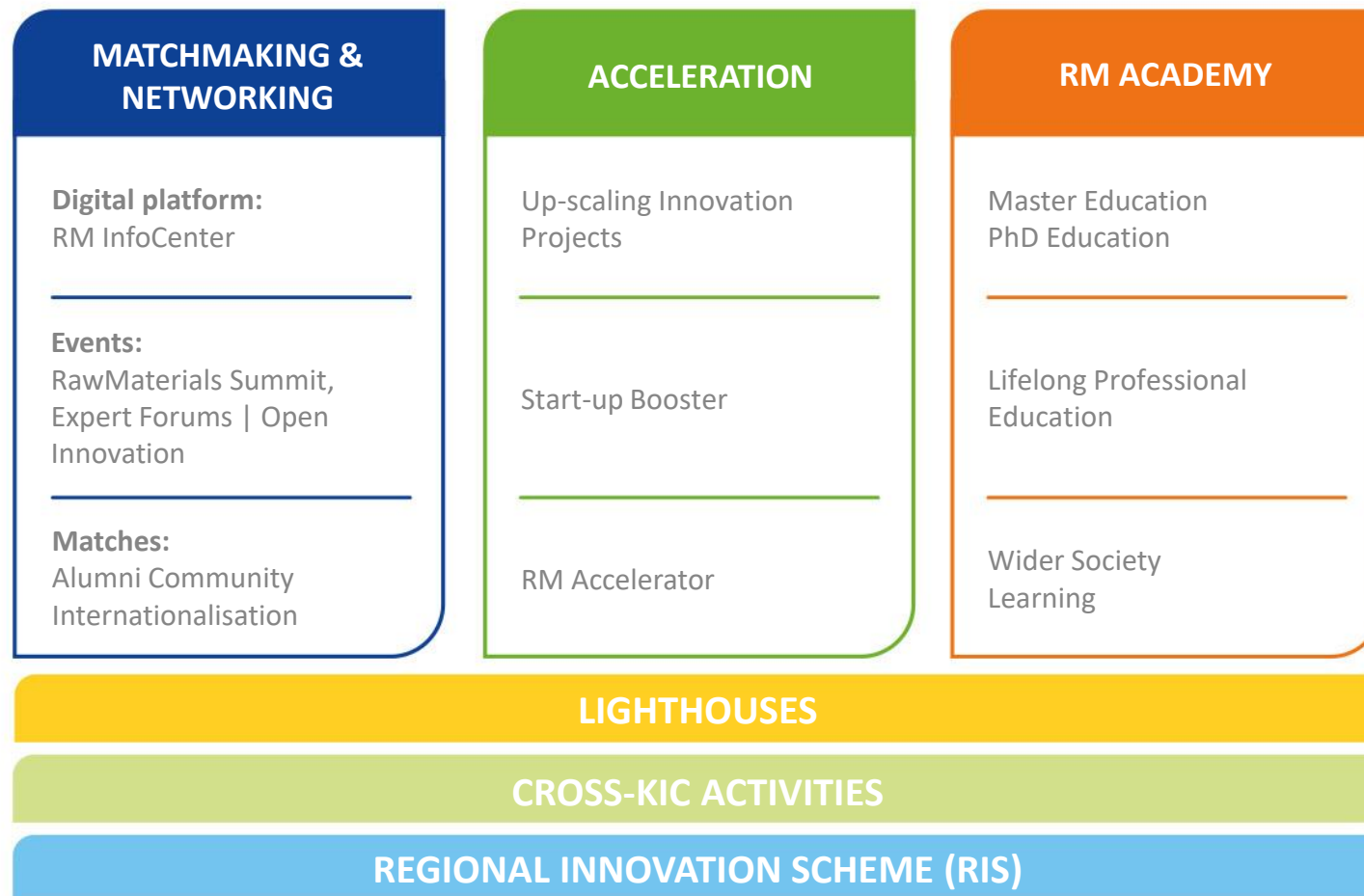


# EIT RawMaterials Innovation Themes

- **Exploration** and raw materials resources assessment
- **Mining** in challenging environments
- Increased **resource efficiency** in mineral and metallurgical processes
- **Recycling** and material chain optimisation for end-of-life products
- **Substitution** of critical and toxic materials in products for optimised performance
- Design of products and services for the **circular economy**



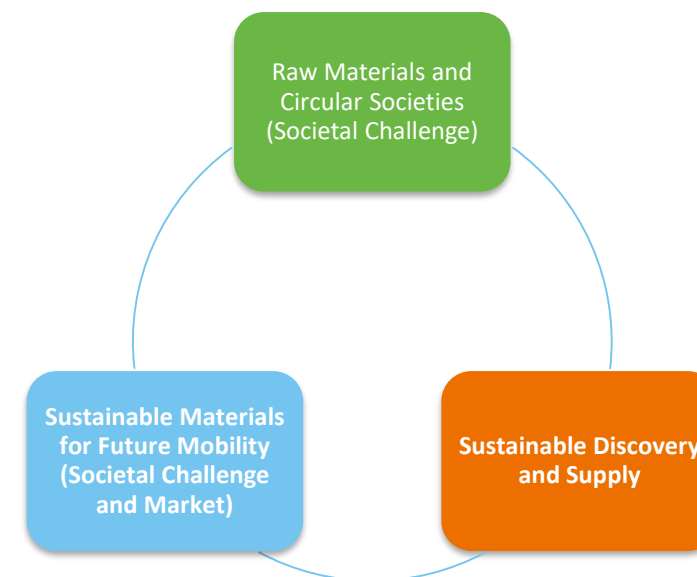
# Matchmaking & Networking, Acceleration, Education A



# Lighthouse innovation programmes

 *EIT RawMaterials Lighthouses are strategic innovation initiatives in the raw materials sector that address economic and societal challenges in Europe.*

- Lighthouses will be implemented through strategic and operational actions such as Innovation and Education Projects, Matchmaking events and Business creation activities as well as:
  - Strategic actions in close coordination with external stakeholders
  - The European Commission
  - National initiatives and Cross-KIC activities
- High-impact activities will contribute to the solution of important societal challenges and that will enhance the role of EIT RawMaterials as a leading innovation community
- Identifying future challenges and developing the ability to address them in the partnership





# Raw Materials and Circular Societies Lighthouse

Every one of us is consuming on roughly three times as much energy and twice as many materials as our ancestors were consuming in 1900. And what's more, there are now over 7.2 billion of us doing so, compared with 1.6 billion back in 1900.

EEA

From linear to Circular Societies – EIT Rawmaterials key stakeholder in Europe

# Raw Materials and Circular Societies Lighthouse – KAVA topics

1. New or improvement of existing tools to assess circularity and sustainability assessment.
2. Tools supporting transition to Circular Society as for example data gathering/material flow analysis tools, tools to support transition to Circular Cities,.....
3. Circular products, design for circularity.
4. Technological and non-technological solutions to support Industrial Symbiosis (materials and water).
5. Recycling of end-of-life consumer products (including collection, pre-treatment and recovery technologies)
6. Resources efficiency in the Metallurgical Processing
7. Education for Circular Economy

# Raw Materials and Circular Societies LH – Project Portfolio KAVA 1-5

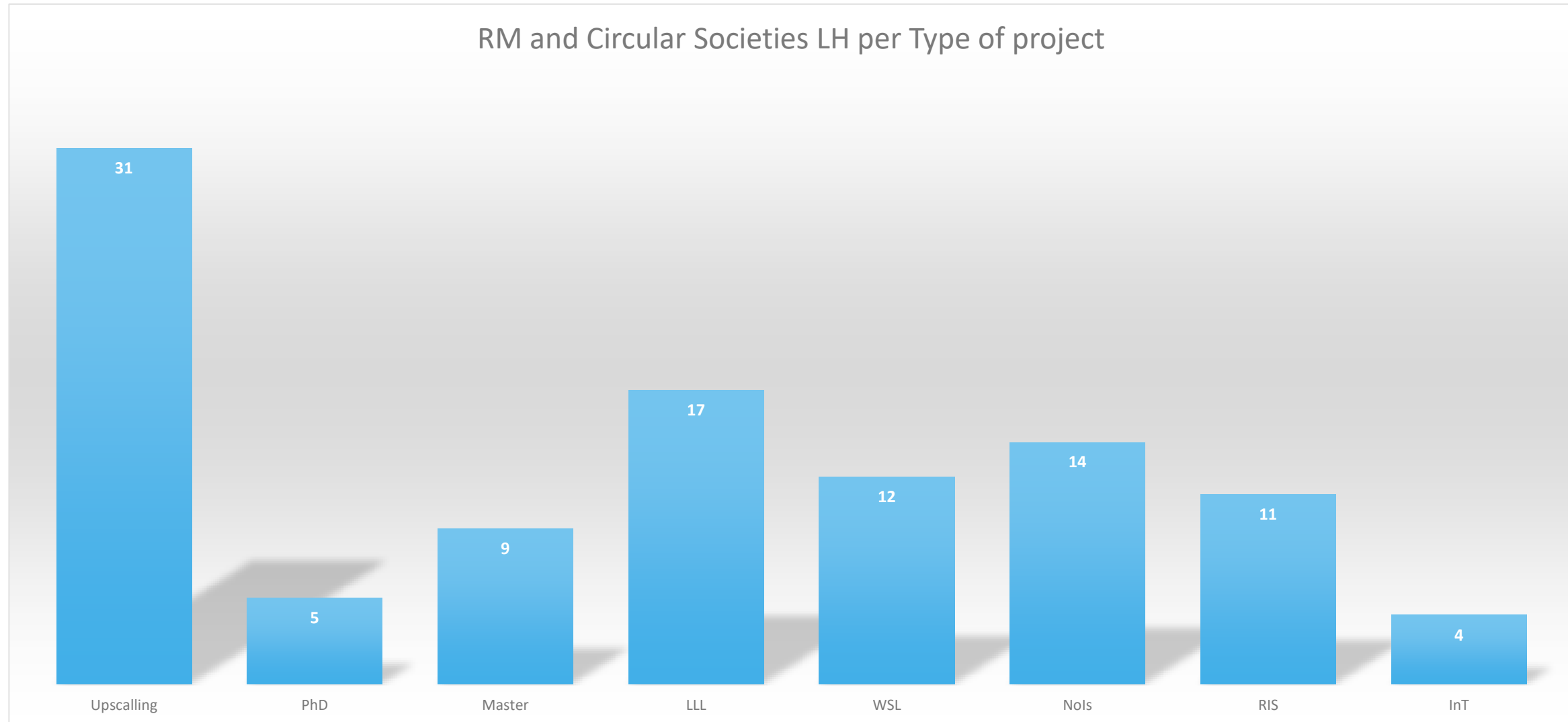
103 projects

- 31 Innovation projects [UpScaling]
- 14 Network of Infrastructure
- 9 Master Education
- 5 PhD Education
- 17 Life-Long Learning
- 12 Wider Society Learning
- 11 Regional Innovation Scheme
- 4 Internationalisation

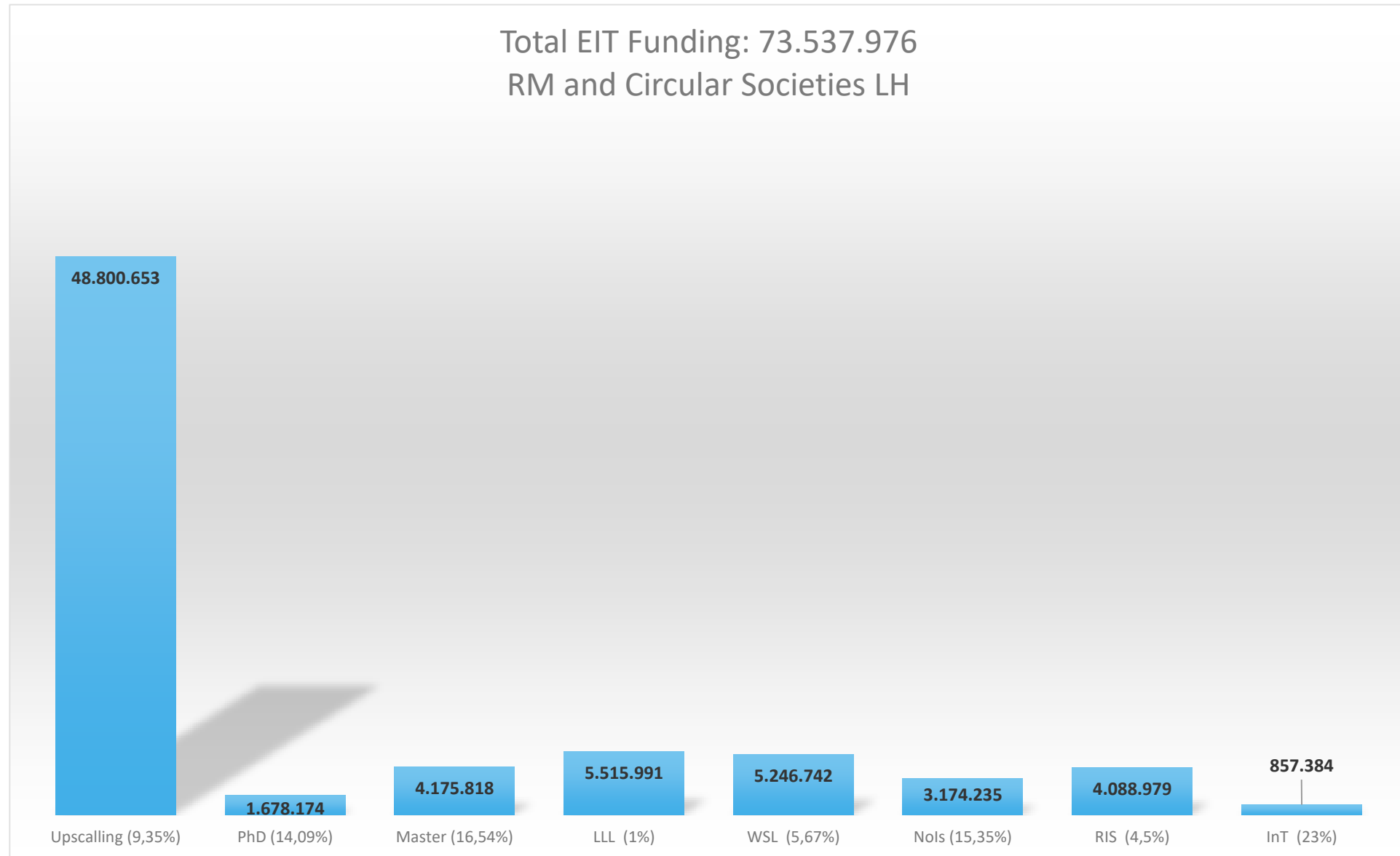
Total EIT funding (whole duration of the projects): 73.537.976

Total Co-Funding: 7.625.475

# RM and Circular Societies – Project Portfolio KAVA 1-5



# RM and Circular Societies – Project Portfolio (co-funding ratio) KAVA 1-5





## KAVA 6

Education: 22 – 12 funded

Baltic 2 (LLL) – 1 funded

Central 2 (1 LLL, 1 PhD) – 2 funded

North 1 (LLL) – 1 funded

South 5 (4 WSL, 1 LLL) – 4 funded

West 12 (3 MsC, 2 LLL, 2 PhD, 5 WSL) – 4 funded

Ris/INT: 4 – 1 funded

Central 2 – 1 funded

West 1 – 0 funded

South 1 – 0 funded

Upscaling: 17 – 8 funded

Baltic 3 – 1 funded

Central 3 – 2 funded

East 2 – 1 funded

North 3 – 1 funded

South 3 – 2 funded

West 2 – 1 funded

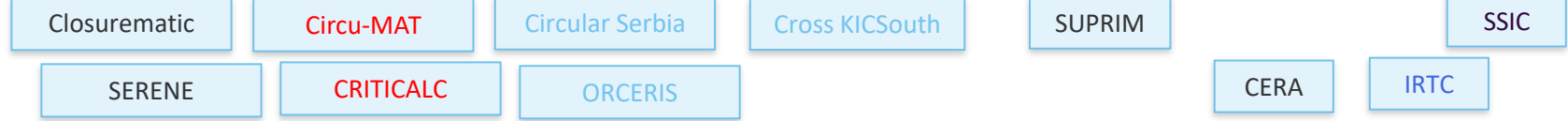
Total: 43 proposals – 21 funded

# Circular Societies– Portfolio Analysis

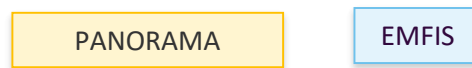
## Themes

Existing Up-scaling, Education (red), RIS (blue), Nol (grey), Knowledge creation , INT (yellow) projects that match specific topics. KAVA 6 projects (Green)

### Modelling Tools / LCA / Circularity



### Data Management /MFA / Design for the Circular Economy



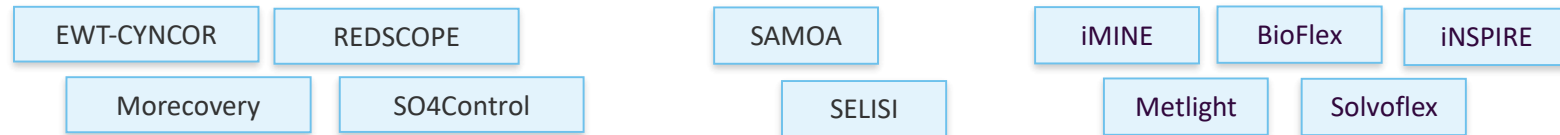
### Industrial Symbiosis / Industrial Waste Valorisation /



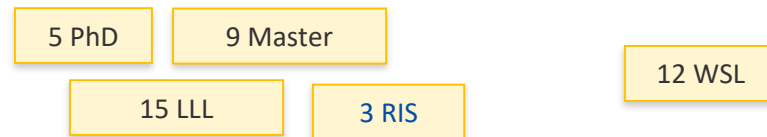
### Recycling / End-of-Life Products



### Resources efficiency- Metallurgical processing



### Education for Circular societies / Awareness



# Circular Societies– Portfolio Analysis

## Themes

Existing Up-scaling (black), Education (red), RIS (blue), Nol (grey), Knowledge creation, INT (yellow) projects that match specific topics. KAVA 6 projects (Green)

Modelling Tools / LCA / Circularity

GUCCIS

IRTC Business

Data Management /MFA / Design for the Circular Economy

Industrial Symbiosis / Industrial Waste Valorisation

STORM

Residuflex

IntCEB

DESULF

SAMEX

TETALEAD

ERMAT

Inco PILES

DIGISERplus

Recycling / End-of-Life Products

AUSOM

RAMSES-4 CE

VALOMAG

CHARAMBA

Resources efficiency- Metallurgical processing

Education for Circular societies / Awareness/

2 LLL

7 WSL

2 PhD

1 MsC

Cross Topic Knowledge Creation Call

CIRCUIT

POLICE

# Strategy Actions – Circular Society Prize

- Prize 2020
- 60 keuros (30-20-10)
- Focus in New business models for Circular Economy
  - Repairing, Reuse, Sharing economy, From products to services, .....
- EIT Rawmaterials is in conversation with ICLEI (Local Governments for Sustainability), VEOLIA (POP-UP program <https://www.veolia.com/en/veolia-group/media/news/veolia-launches-pop-new-social-entrepreneurial-incubator-platform>) and RREUSE (<https://www.rreuse.org>) to check possible ways of collaboration for this specific call.

## Strategy Actions – 2018

- EC/DGs: DG GROW; DG ENV; DG RTD; DG REGIO
- Agencies/Programs: EASME, LIFE, Interreg
- European Initiatives: SPIRE, EU Urban Agenda, EREK, .....
- Stakeholders: ICLEI (GCCC), ECERA, Eurocities, ACR+, .....
- Cross KIC action for collaboration Circular Economy starting 2020: EIT Rawmaterials, EIT Digital, EIT Food, EIT UrbanMobility, EIT Manufacturing and EIT Climate KIC





RawMaterials

Connecting matters

Ignacio Calleja

Senior Advisor for Circular Economy and Recycling

[Ignacio.calleja@eitrawmaterials.eu](mailto:Ignacio.calleja@eitrawmaterials.eu)



RawMaterials is supported by the EIT,  
a body of the European Union

Thank you!